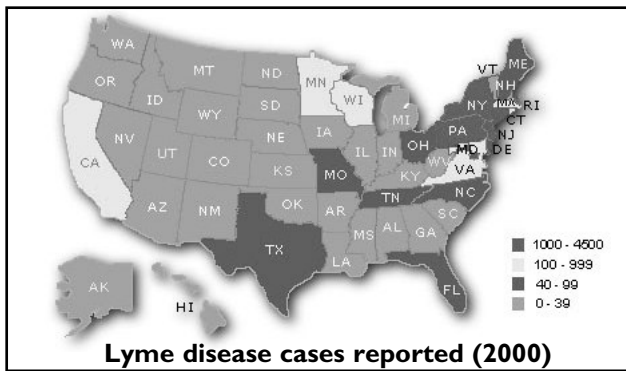
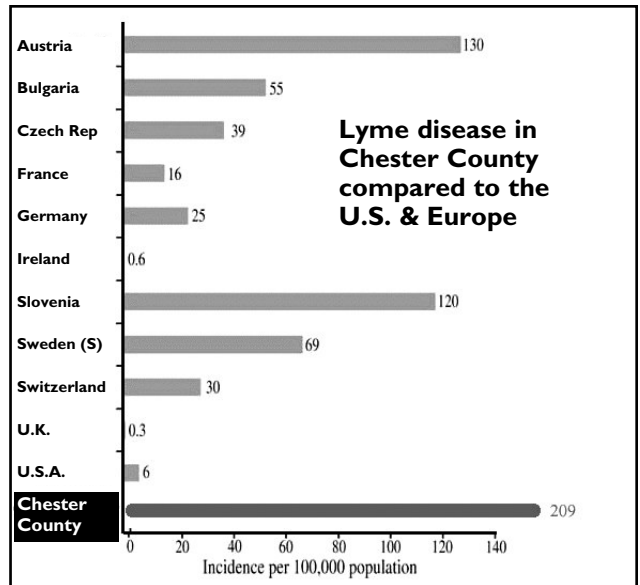
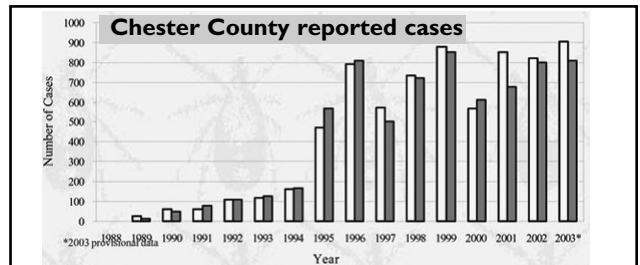
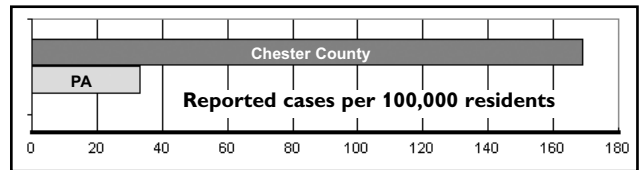
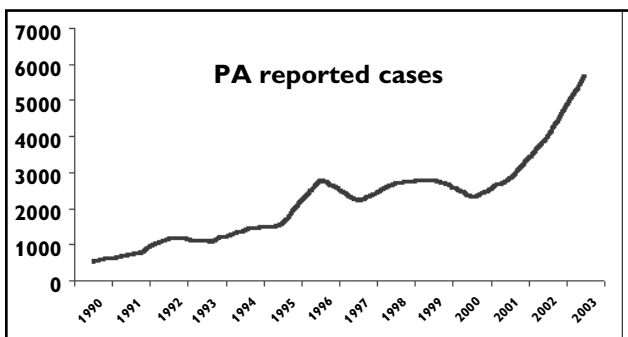
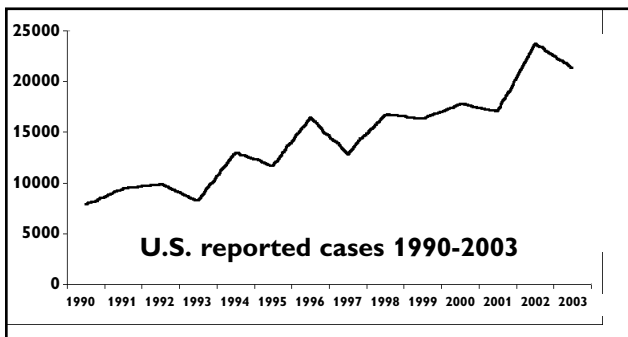


#2 Lyme Disease Prevalence



- Lyme disease reporting has been required by the U.S. Centers for Disease Control and Prevention (CDC) since 1982.
- The northeastern U.S. has the highest rate of reported Lyme disease in the country.
- The CDC sets a very high standard for a case to be added to the statistics.
- The CDC estimates that only 1 out of 10 cases of Lyme disease is reported.



Important Facts

- Lyme disease is increasing
 - 10X increase in PA 1990-2003
 - 44% increase in PA 2002-2003
 - PA is now #1 state in the U.S.
- School-age children are at risk
 - 19% of Lyme disease cases in a local survey were between ages 6 and 20

Learn more from our free booklet, **Lyme Disease: The Basics**, and from our Web site



Lyme Disease Association of Southeastern Pennsylvania, Inc.

The LDASEPA is an all-volunteer, 501(c)(3) non-profit corporation dedicated to education and support

www.Lymepa.org

PO Box 181 • Pocopson, PA • 19366

610-388-7333